

## INLINE WATER FILTER

Removes chlorine, bad tastes and odours with scale prevention  
Capacity: 6,000 litres/12 months  
20 micron rating  
Maximum operating pressure 100psi  
Maximum water temperature 35C  
Recommended maximum flow rates 3 lpm.  
Dimensions: 300mm L x 55mm Dia  
3/4" male connections



Part No	Description
CTO-S	INLINE WATER FILTER

## MANUAL WATER SOFTENERS

**DVA MANUAL SOFTENER 8 litres 3/4"**  
water pressure 1-8 bar  
maximum recommended flow rate 1000l/h  
salt for regeneration 1 kg  
inlet/outlet connections 3/4"  
ambient temperature 6-25°C  
dimensions: h 400, w 225 ø 190 mm  
weight 7.5kg



Part No	Description
9V023	DVA MANUAL WATER SOFTENER 8 litres 3/4"

**DVA MANUAL SOFTENER 12 litres 3/4"**  
water pressure 1-8 bar  
maximum recommended flow rate 1000l/h  
salt for regeneration 1.5 kg  
inlet/outlet connections 3/4"  
ambient temperature 6-25°C  
dimensions: h 500, w 225 ø 190 mm  
weight 9.5kg

Part No	Description
9V029	DVA MANUAL WATER SOFTENER 12 litres 3/4"

**DVA MANUAL SOFTENER 16 litres 3/4"**  
water pressure 1-8 bar  
maximum recommended flow rate 1000l/h  
salt for regeneration 2 kg  
inlet/outlet connections 3/4"  
ambient temperature 6-25°C  
dimensions: h 600, w 225 ø 190 mm  
weight 12kg

Part No	Description
9V031	DVA MANUAL WATER SOFTENER 16 litres 3/4"

## AUTOMATIC WATER SOFTENERS

With electric timer for automatic regeneration.  
 From 1 to 12 days between regenerations can be pre-set.  
 Regeneration auto starts at 2.00am but can be changed.  
 1.5-5 bar water pressure (see note below)  
 230V 3A electrical supply  
 1/4" BSP inlet/outlet with 1/2" drain & overflow hose connections  
 Set of inlet, outlet and drain hoses supplied  
 Water hardness testing kit supplied  
 Covered by a five year parts warranty with the first year including on site labour in mainland UK



**5 YEAR**  
Parts Warranty



Part No	Description
CS10	<b>COLD WATER SOFTENER 1100 LITRE CAPACITY</b> 50°C maximum water temperature 10 litres resin capacity 1.4 kg salt used per regeneration dimensions 525(H) x 275(W) x 465(D) mm
CS15	<b>COLD WATER SOFTENER 2075 LITRE CAPACITY</b> 50°C maximum water temperature 13 litres resin capacity 1.9 kg salt used per regeneration dimensions 595(H) x 275(W) x 465(D) mm
CS20	<b>COLD WATER SOFTENER 3100 LITRE CAPACITY</b> 50°C maximum water temperature 18 litres resin capacity 3.0 kg salt used per regeneration dimensions 755(H) x 275(W) x 465(D) mm
CS25	<b>COLD WATER SOFTENER 4325 LITRE CAPACITY</b> 50°C maximum water temperature 23 litres resin capacity 4.0 kg salt used per regeneration dimensions 1000(H) x 275(W) x 465(D) mm
HW65/10	<b>HOT WATER SOFTENER 1100 LITRE CAPACITY</b> 65°C maximum water temperature 10 litres resin capacity 1.4 kg salt used per regeneration dimensions 525(H) x 275(W) x 465(D) mm
HW65/15	<b>HOT WATER SOFTENER 2075 LITRE CAPACITY</b> 65°C maximum water temperature 13 litres resin capacity 1.9 kg salt used per regeneration dimensions 595(H) x 275(W) x 465(D) mm
HW65/20	<b>HOT WATER SOFTENER 3100 LITRE CAPACITY</b> 65°C maximum water temperature 18 litres resin capacity 3.0 kg salt used per regeneration dimensions 755(H) x 275(W) x 465(D) mm
HW65/25	<b>HOT WATER SOFTENER 4325 LITRE CAPACITY</b> 65°C maximum water temperature 23 litres resin capacity 4.0 kg salt used per regeneration dimensions 1000(H) x 275(W) x 465(D) mm
CSBYPASS	<b>COLD WATER BYPASS ASSEMBLY</b>
HWBYPASS	<b>HOT WATER BYPASS ASSEMBLY</b>



**Note** Capacity shown is approximate for water hardness of 300ppm. Maximum water pressure is 5 bar (70 psi) and exceeding this pressure can result in damage to, or failure of, the softener. If daytime water pressure exceeds 3.5 bar (50psi) pressure overnight might rise above 5 bar (70 psi). If pressure might exceed 5 bar (70 psi) a pressure reducing valve must be fitted.

## ELECTRONIC METER WATER SOFTENERS

With electronic timer with built-in water meter to measure the amount of water used, and automatically activate a regeneration when needed, guaranteeing high efficiency and low running costs.

Low salt and water use – only regenerates when necessary based on the actual water usage..

1.5-5 bar water pressure (see note below)

230V 3A electrical supply

¾”BSP inlet/outlet with ½” drain & overflow hose connections

Set of inlet, outlet and drain hoses supplied

Water hardness testing kit supplied

Covered by a five year parts warranty with first two years including on site labour in mainland UK



**5 YEAR  
Parts Warranty**

Part No	Description
<b>CS10-M</b>	<b>ELECTRONIC COLD WATER SOFTENER 1100 LITRE CAPACITY</b> 50°C maximum water temperature 10 litres resin capacity 1.4 kg salt used per regeneration dimensions 525(H) x 275(W) x 465(D) mm
<b>CS15-M</b>	<b>ELECTRONIC COLD WATER SOFTENER 2075 LITRE CAPACITY</b> 50°C maximum water temperature 13 litres resin capacity 1.9 kg salt used per regeneration dimensions 595(H) x 275(W) x 465(D) mm
<b>CS20-M</b>	<b>ELECTRONIC COLD WATER SOFTENER 3100 LITRE CAPACITY</b> 50°C maximum water temperature 18 litres resin capacity 3.0 kg salt used per regeneration dimensions 755(H) x 275(W) x 465(D) mm
<b>CS25-M</b>	<b>ELECTRONIC COLD WATER SOFTENER 4325 LITRE CAPACITY</b> 50°C maximum water temperature 23 litres resin capacity 4.0 kg salt used per regeneration dimensions 1000(H) x 275(W) x 465(D) mm
<b>HW65/10-M</b>	<b>ELECTRONIC HOT WATER SOFTENER 1100 LITRE CAPACITY</b> 65°C maximum water temperature 10 litres resin capacity 1.4 kg salt used per regeneration dimensions 525(H) x 275(W) x 465(D) mm
<b>HW65/15-M</b>	<b>ELECTRONIC HOT WATER SOFTENER 2075 LITRE CAPACITY</b> 65°C maximum water temperature 13 litres resin capacity 1.9 kg salt used per regeneration dimensions 595(H) x 275(W) x 465(D) mm
<b>HW65/20-M</b>	<b>ELECTRONIC HOT WATER SOFTENER 3100 LITRE CAPACITY</b> 65°C maximum water temperature 18 litres resin capacity 3.0 kg salt used per regeneration dimensions 755(H) x 275(W) x 465(D) mm
<b>HW65/25-M</b>	<b>ELECTRONIC HOT WATER SOFTENER 4325 LITRE CAPACITY</b> 65°C maximum water temperature 23 litres resin capacity 4.0 kg salt used per regeneration dimensions 1000(H) x 275(W) x 465(D) mm
<b>CSBYPASS</b>	<b>COLD WATER BYPASS ASSEMBLY</b>
<b>HWBYPASS</b>	<b>HOT WATER BYPASS ASSEMBLY</b>



**Note** Capacity shown is approximate for water hardness of 300ppm. Maximum water pressure is 5 bar (70 psi) and exceeding this pressure can result in damage to, or failure of, the softener. If daytime water pressure exceeds 3.5 bar (50psi) pressure overnight might rise above 5 bar (70 psi). If pressure might exceed 5 bar (70 psi) a pressure reducing valve must be fitted.



## EDC (ELECTRONIC DEMAND CONTROL) COLD WATER SOFTENERS

Control valve with built-in water meter to measure the amount of water you use, and automatically activate a regeneration when needed, guaranteeing high efficiency and low running costs.

Low salt and water use – only regenerates when necessary based on the actual water usage.

High flow rates – up to 90 lpm at 1 bar pressure drop.

Self-adjusting reserve capacity constantly adjusts to the daily needs.

Solid-state electronics with simple programming provides a reliable metering system that retains memory, even in the event of a power cut.

24 volt plug-in transformer for safe operation.

400 micron injector protection prevents injector blockages and subsequent overflows.

Integral bypass automatically provides water during regeneration process.

1" BSP inlet/outlet connections with adapters to 22mm supplied.

3/8" brine connection and 1/2" drain hose connection.

Set of inlet, outlet and drain hoses supplied

Water hardness testing kit supplied

Covered by a three year parts warranty with first year including on site labour in mainland UK



**3 YEAR  
Parts Warranty**

Part No	Description
<b>EDC30</b>	<b>COLD WATER SOFTENER 5200 LITRE CAPACITY</b> 5 to 45°C water temperature Service flow rate 56 lpm (78 lpm peak) 30 litres resin capacity 4.8kg salt used per regeneration Pressure Tank dimensions 1100(H) x 275(W) x 410(D) mm SaltTank dimensions 850(H) x 550 (D) mm
<b>EDC50</b>	<b>COLD WATER SOFTENER 8650 LITRE CAPACITY</b> 5 to 45°C water temperature Service flow rate 57 lpm (80 lpm peak) 50 litres resin capacity 8kg salt used per regeneration Pressure Tank dimensions 1580(H) x 275(W) x 410(D) mm SaltTank dimensions 775(H) x 680 (D) mm
<b>EDC75</b>	<b>COLD WATER SOFTENER 13000 LITRE CAPACITY</b> 5 to 45°C water temperature Service flow rate 59 lpm (82 lpm peak) 75 litres resin capacity 12kg salt used per regeneration Pressure Tank dimensions 1580(H) x 355(W) x 450(D) mm SaltTank dimensions 775(H) x 680 (D) mm

**Note**

Capacity shown is approximate for water hardness of 300ppm and operating pressure of 3 bar @ 150g/l resin brining. Operating water pressure is 1.4 to 5 bar (70 psi) and exceeding this pressure can result in damage to the softener. If daytime water pressure exceeds 3.5 bar (50psi) pressure then pressure overnight might rise above 5 bar (70 psi). If pressure might exceed 5 bar (70 psi) a pressure reducing valve must be fitted.

### WATER SOFTENER ANCILLARIES

Part No	Description
<b>PM45BP</b>	<b>PRESSCONTROL WATER BOOSTER PUMP</b>
<b>PLV15</b>	<b>15mm PRESSURE LIMITING VALVE</b>



## AUTOMATIC COLD WATER SOFTENERS

Suitable for cold water 2-38°C (protect from freezing)  
 With electric timer for automatic regeneration.  
 40 minute regeneration cycle of back wash/brine rinse/fast  
 rinse/brine refill.  
 From 1 to 12 days between regenerations can be pre-set to suit  
 the throughput and local water conditions.  
 Regeneration auto starts at 2.00am when the kitchen is likely to  
 be inactive.  
 Supplied with install kit of ¾" BSP reinforced flexible hose, ½"  
 drain hose and ½" overflow hose.  
 Water consumption for regeneration is approximately 4% of the  
 rated capacity.



Part No	Description
<b>E5T</b>	<b>COLD WATER SOFTENER 660 LITRE CAPACITY</b> 660 litres treated water capacity 0.7 kg salt capacity dimensions 525(H) x 280(W) x 450(D) mm ¾" water inlet/outlet connections ½" push fit drain/overflow connections drain at height of 390mm height of overflow 292mm (requires gravity feed to drain) 1.5-4.5 bar water pressure (see note below) 230V 3A electrical supply
<b>E10T</b>	<b>COLD WATER SOFTENER 1494 LITRE CAPACITY</b> 1494 litres water capacity 1.5 kg salt capacity dimensions 645(H) x 280(W) x 450(D) mm ¾" BSP water inlet/outlet connections ½" push fit drain/overflow connections height of drain 495mm height of overflow 370mm (requires gravity feed to drain) 1.5-4.5 bar water pressure (see note below) 230V 3A electrical supply
<b>E14T</b>	<b>COLD WATER SOFTENER 2250 LITRE CAPACITY</b> 2250 litres water capacity 2.4 kg salt capacity dimensions 690(H) x 280(W) x 450(D) mm ¾" BSP water inlet/outlet connections ½" push fit drain/overflow connections height of drain 630mm height of overflow 518mm (requires gravity feed to drain) 1.5-4.5 bar water pressure (see note below) 230V 3A electrical supply
<b>E18T</b>	<b>COLD WATER SOFTENER 2900 LITRE CAPACITY</b> 2900 litres water capacity 2.8 kg salt capacity dimensions 690(H) x 280(W) x 450(D) mm ¾" BSP water inlet/outlet connections ½" push fit drain/overflow connections height of drain 542mm height of overflow 420mm (requires gravity feed to drain) 1.5-4.5 bar water pressure (see note below) 230V 3A electrical supply



**Note**

If water pressure is less than 1.5 bar (22 psi) pressure booster set IP13 is recommended (suitable for cold/hot water supply) or use pumped water softener CW10PS (for cold water supply only).  
 If water pressure exceeds 4.5 bar (65 psi) a pressure reducing valve should be fitted.

## AUTOMATIC HOT WATER SOFTENERS

Suitable for hot water up to 60°C.  
 With electric timer for automatic regeneration.  
 40 minute regeneration cycle of back wash/brine rinse/fast  
 rinse/brine refill.  
 From 1 to 12 days between regenerations can be pre-set to suit  
 the throughput and local water conditions.  
 Regeneration auto starts at 2.00am when the kitchen is likely to  
 be inactive.  
 Supplied with install kit of ¾" BSP reinforced flexible hose,  
 ½" drain hose and ½" overflow hose.  
 Water consumption for regeneration is approximately 4% of the  
 rated capacity.



Part No	Description
<b>HWE10</b>	<b>HOT WATER SOFTENER 1494 LITRE CAPACITY</b> 1494 litres water capacity 1.5 kg salt capacity dimensions 690(H) x 280(W) x 450(D) mm ¾" BSP water inlet/outlet connections ½" push fit drain/overflow connections height of drain 535mm height of overflow 380mm (requires gravity feed to drain) 1.5-4.5 bar water pressure (see note below) 230V 3A electrical supply
<b>HWE14</b>	<b>HOT WATER SOFTENER 2250 LITRE CAPACITY</b> 2250 litres water capacity 2.4 kg salt capacity dimensions 715(H) x 280(W) x 450(D) mm ¾" BSP water inlet/outlet connections ½" push fit drain/overflow connections height of drain 590mm height of overflow 420mm (requires gravity feed to drain) 1.5-4.5 bar water pressure (see note below) 230V 3A electrical supply
<b>HWE18</b>	<b>HOT WATER SOFTENER 2900 LITRE CAPACITY</b> 2900 litres water capacity 2.8 kg salt capacity dimensions 715(H) x 280(W) x 450(D) mm ¾" BSP water inlet/outlet connections ½" push fit drain/overflow connections height of drain 590mm height of overflow 420mm (requires gravity feed to drain) 1.5-4.5 bar water pressure (see note below) 230V 3A electrical supply



### Note

If water pressure is less than 1.5 bar (22 psi) pressure booster set IP13 is recommended (suitable for cold/hot water supply).  
 If water pressure exceeds 4.5 bar (65 psi) a pressure reducing valve should be fitted.  
 If water temperature may exceed 60°C a mixer valve should be fitted in the water supply to hot water softeners.



## ELECTRONIC AUTOMATIC COLD WATER SOFTENERS

Suitable for cold water 2-35°C (protect from freezing).  
 With Logix electronic timer for automatic regeneration with variable regeneration time and frequency to suit water throughput from 1 to 99 days between regenerations and up to 2 regeneration cycles a day can be pre-set.  
 Can be set on a daily basis to avoid weekends.  
 12V low voltage operation - plug in transformer supplied for a 240V 3A electrical supply  
 Supplied with install kit of 3/4" BSP reinforced flexible hose, 1/2" drain hose and 1/2" overflow hose.  
 Water consumption for regeneration is approximately 4% of the rated capacity.



Part No	Description
AT5	<b>ELECTRONIC COLD WATER SOFTENER 660 LITRE CAPACITY</b> 660 litres water capacity 0.7 kg salt capacity dimensions 520(H) x 280(W) x 450(D) mm 3/4" water inlet/outlet connections 1/2" BSP drain at height of 354mm height of overflow 292mm (requires gravity feed to drain) 1.5-4.5 bar water pressure (see note below)
AT10	<b>ELECTRONIC COLD WATER SOFTENER 1494 LITRE CAPACITY</b> 1494 litres water capacity 1.5 kg salt capacity dimensions 610(H) x 280(W) x 450(D) mm 3/4" water inlet/outlet connections 1/2" BSP drain at height of 470mm height of overflow 370mm (requires gravity feed to drain) 1.5-4.5 bar water pressure (see note below)
AT14	<b>ELECTRONIC COLD WATER SOFTENER 2250 LITRE CAPACITY</b> 2250 litres water capacity 2.4 kg salt capacity dimensions 665(H) x 280(W) x 450(D) mm 3/4" water inlet/outlet connections 1/2" BSP drain at height of 604mm height of overflow 518mm (requires gravity feed to drain) 1.5-4.5 bar water pressure (see note below)
AT18	<b>ELECTRONIC COLD WATER SOFTENER 2900 LITRE CAPACITY</b> 2900 litres water capacity 2.8 kg salt capacity dimensions 665(H) x 280(W) x 450(D) mm 3/4" water inlet/outlet connections 1/2" BSP drain at height of 507mm height of overflow 420mm (requires gravity feed to drain) 1.5-4.5 bar water pressure (see note below)



**Note**  
 If water pressure is less than 1.5 bar (22 psi) pressure booster set IP13 is recommended (suitable for cold/hot water supply) or use pumped water softener CW10PS (for cold water supply only).  
 If water pressure exceeds 4.5 bar (65 psi) a pressure reducing valve should be fitted.

## PUMPED WATER SOFTENERS

Designed for low water pressure/flow applications  
 With integral electronically controlled pump  
 Cold models maximum temperature 35°C (protect from freezing)  
 Hot models maximum temperature 60°C (protect from freezing)  
 Stated capacity approximate at 20°C Clarke  
 3/4" BSP water inlet/outlet/drain, overflow 3/4" (1" with break tank)  
 Maximum pressure 1.5 bar - with break tank 4 bar  
 Height - 700mm, Width - 420mm, Depth - 580mm  
 240V 3Amp constant electrical supply

Part No	Description
CW10PS	1494ltr COLD WATER PUMPED SOFTENER
CW14PS	2278ltr COLD WATER PUMPED SOFTENER
CW18PS	2929ltr COLD WATER PUMPED SOFTENER
HW10PS	1494ltr HOT WATER PUMPED SOFTENER
HW14PS	2278ltr HOT WATER PUMPED SOFTENER

.. **PUMPED WATER SOFTENERS WITH BREAK TANK**  
 For use where a class A air gap is required, such as dishwashers

Part No	Description
BTS10	1494ltr COLD WATER PUMPED SOFTENER WITH BREAK TANK
BTS18	2929ltr COLD WATER PUMPED SOFTENER WITH BREAK TANK
HWBTS10	1494ltr HOT WATER PUMPED SOFTENER WITH BREAK TANK
HWBTS18	2929ltr HOT WATER PUMPED SOFTENER WITH BREAK TANK



## PRESSURE BOOSTER SET

for use with cold or hot water supplies when the incoming pressure is below 1.5 bar (22 psi)

Part No	Description
IP13	PRESSURE BOOSTER SET



## HOT WATER PRESSURE SENSITIVE BOOSTER SET

for use with cold or hot water supplies up to 60°C  
 pressure switch operated pump when water is required  
 and the incoming pressure falls below 2.2bar  
 230V/50Hz/1ph 0.37kW (P2) 2.3A  
 pump capacity 40 litres/min at 5m head  
 1" G inlet/outlet connections  
 dimensions 260 x 120mm x 205mm

Part No	Description
25000207	HOT WATER PRESSURE SENSITIVE BOOSTER SET





### UNIVERSAL RINSE BOOSTER PUMP

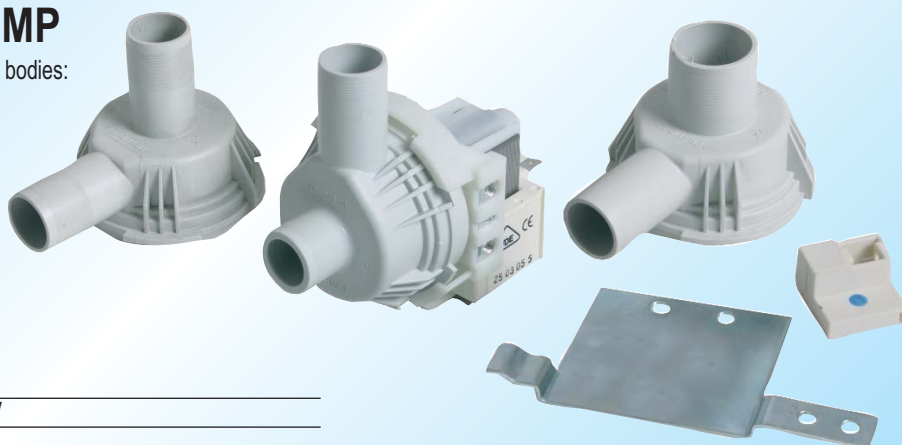
0.10HP/0.075kW/1.1A /230V/50Hz  
 Inlet ø 28 mm, outlet ø 28 mm  
 Flow rate 80 l/min  
 Capacitor 5 µF



Part No	Description
106051	UNIVERSAL RINSE PUMP 230V

### UNIVERSAL DRAIN PUMP

220-240V 50Hz 30W pump supplied with 3 head bodies:  
 head 1: inlet 22x25mm, outlet 22x35mm  
 head 2: inlet 22x40mm, outlet 22x35mm  
 head 2: inlet 30x30mm, outlet 22x35mm



Part No	Description
106001	UNIVERSAL DRAIN PUMP 230V

### DRAIN PUMP 40W 230V 50HZ

Inlet external ø 22 mm - outlet external ø 30 mm



Part No	Description
106002	DRAIN PUMP 40W 230V

### DRAIN PUMP 40W 230V 50HZ

Inlet external ø 24 mm - outlet external ø 22 mm



Part No	Description
106003	DRAIN PUMP 40W 230V